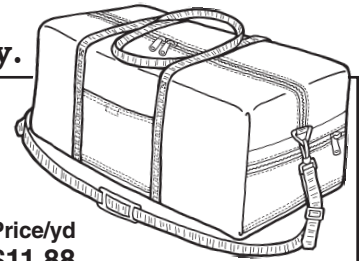


SALE! 2009 Update

We ship fabric, hardware and zippers to addresses in the USA only.



15% OFF

HEAVYWEIGHT WATERPROOF FABRICS

Uses: Luggage, backpacks, cargo bags, tarps, spray decks, gaiters, totes, etc.

F2 – Cordura® – 1000 Denier

Dark grey 11 oz/sq yd 60" wide **Sale Price/yd \$11.88**
 100% Nylon fabric with a 1 oz. polyurethane coating. Extra strong, abrasion resistant, waterproof with durable, water repellent finish.

F4 – Pack Cloth – 420 Denier

Dark grey, red, royal 11 oz/sq yd 60" wide **\$6.75**
 100% Nylon fabric with a 1 oz. polyurethane coating. Extra strong, abrasion resistant, waterproof with durable water repellent finish.

15% OFF

LIGHTWEIGHT WATERPROOF FABRICS

Uses: foul weather gear, tent flies, banners, dry bags, boat covers, shower curtains, etc.



F5T – Coated Nylon Taffeta

White 2.7 oz/sq yd 60" wide **Sale Price/yd \$4.98**
 100% Nylon with 1/2 oz. polyurethane coating. Wind & waterproof, durable water repellent finish.

F5R – Coated Nylon Ripstop

Black, royal, yellow 2.7 oz/sq yd 60" wide **\$5.95**
 100% Nylon with 1/8" ripstop grid. DWR, fire retardant, ultraviolet-inhibiting finishes. 1/2 oz. polyurethane coating.

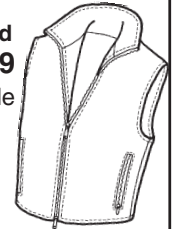
40-50% OFF

WATER REPELLENT FABRICS

Uses: Jackets, running suits, linings, tents, stuff sacks shower curtains, sleeping bags.

F21 – Sueded Microfiber

Bright royal 2.2 oz/sq yd 60" wide **Sale Price/yd \$3.49**
 Durepel long-lasting water-repellent finish. Optimum balance of breathability & water resistance. A soft, cozy lining fabric!



F22 – Hi-Count Nylon Taffeta

Brown, cinnamon, jade, wine, light grey, white, forest, red 2.5 oz/sq yd 60" wide **\$3.49**
Great for linings!
 100% Nylon—160 x 90 threads/sq inch, 70 denier, downproof. Superior quality. DWR finish.

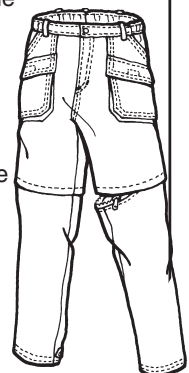


F23 – Tactel – 2-ply Echo

Turquoise, jade, fuchsia, hot pink 3 oz/sq yd 60" wide **\$3.49**
 100% Nylon with a soft sheen, durable wind & water-repellent finish.

F26 – Supplex

Royal, warm grey, white, sage, dark red, teal 2.5-3.5 oz/sq yd 60" wide **\$3.49**
 100% Nylon. A cotton hand with a high-tech DWR water-repellent finish.

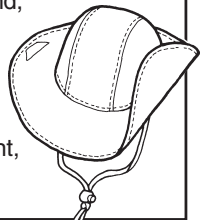


F26N – Supplex

Dark grey, olive, navy, red, tan 2.5-3.5 oz/sq yd 60" wide **\$3.49**
Great for zip-leg pants & other light, breathable, quick-dry clothing. 100% Nylon. A cotton hand, without DWR water-repellent finish.

F27B – Tuftex

Cherry, light grey 45" wide **\$3.49**
 100% Nylon, medium weight water-repellent, with DWR finish.



25-50% OFF

WATERPROOF BREATHABLE FABRICS

Uses: rainwear, foul weather gear, insulated outerwear, gaiters, etc.

F6 – Goretex® – 2 ply

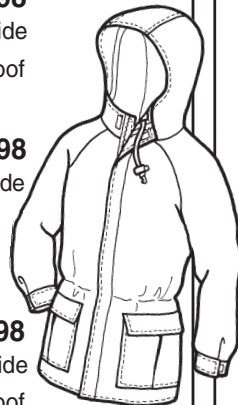
Navy 6 oz/sq yd 60" wide **Sale Price/yd \$14.98**
 100% Nylon Supplex face fabric, waterproof breathable coating. Must be lined.

F6 – Goretex® – 3 ply

Tan ripstop 6 oz/sq yd 60" wide **\$18.98**
 100% Nylon Supplex face fabric, waterproof breathable coating. Doesn't need lining.

F7 – Ultrex® – 2 ply

Red, tan, grey 6 oz/sq yd 60" wide **\$8.98**
 100% Nylon Supplex face fabric, waterproof breathable coating. Must be lined.



SALE! 2009 Update

We ship fabric, hardware and zippers to addresses in the USA only.

POLARTEC® FLEECES



100% Polyester, with high warmth to weight ratio, absorbs little water, dries very quickly.

Uses: Jackets, vests, pants, gloves, hats, slippers, socks, blankets, or linings for outerwear.

20% OFF

F76 – PolarTec® 300 Sale Price/yd **\$12.98**

Brown 9 oz/sq yd 60" wide
Heavy weight double-faced fleece.



15% OFF

F76B – PolarTec® 200 **\$11.98**

Cocoa 7.8 oz/sq yd 60" wide
Medium weight double-faced fleece.



30% OFF

F77 – Powershield **\$16.98**

Dark grey 58"-60" wide
100% Polyester fleece with wind-block membrane & waterproof breathable nylon/lycra face.

MICROFLEECES

F77B – Windstopper Microfleece **\$13.98**

Black 7-9 oz/sq yd 58-60" wide
100% Polyester fleece with wind-block membrane, water-repellent face & knit lining.



10% OFF

F78M – PolarTec® Microfleece 100 **\$8.98**

Buff, light loden, wine
Great for cozy lightweight garments, hats, scarves, throws and blankets. A deliciously soft alternative to 200 weight fleece.

30% OFF

STRETCH FABRICS

Sale Price/yd

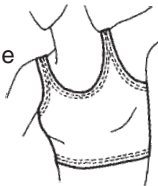
F32 – 4-way Stretch **\$10.98**

Nylon/Lycra Tricot Knit

Red 5.5-6 oz/sq yd 58-60" wide

Uses: Bicycle & aerobic wear, swimsuits, tights, racing suits.

80% Nylon, 20% Lycra. Densely knit, snag resistant.



F38S – PolarTec® 4-way **\$10.98**

Stretch Fleece 54" wide

Periwinkle, purple, spruce, royal, red

Uses: Great for long underwear, leggings.

94% Polyester, 4% Lycra



F40P – Cotton/Poly/Lycra **\$10.98**

Royal, brown 60" wide

Uses: Exercise wear, tights.

44% cotton, 44% Polyester, 10% Lycra
Soft & absorbent.

30% OFF

MISCELLANEOUS FABRICS

Sale Price/yd

F91 – Heavy-Duty Ribbing **\$10.98**

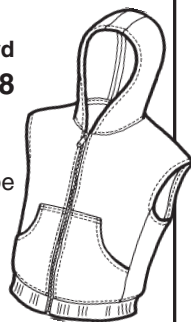
Dark grey, jade, magenta, purple, teal blue, white, wine, yellow

15-18 oz/sq yd 15-17" tube

Uses: waistbands, cuffs, or collars for outerwear.

100% Nylon. Fast drying.

Colors match zippers.



BUCKLES



Double Bar **\$1.50**

2" Black Delrin
Order #: DB200B



Cam **\$1.50**

2" Black Delrin
Order #: CA-200B

SNAP HOOKS



Heavy Duty Swivel Snap **\$.55**

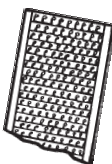
2" wide, swivels and rotates.
Order #: SW-200B/S

HOOK & LOOP – Dense, superior grip!

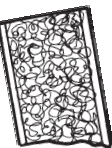
1 yd. minimum Hook or Loop.

Prices are for one side only.

Please use order numbers to indicate hook and/or loop.



HOOK



LOOP

Regular Velcro: Gold

S-VRH-034 – 3/4" Hook

\$.48/yd

S-VRL-034 – 3/4" Loop

\$.48/yd

Regular Velcro: White, Navy

S-VRH-200 – 2" Hook

\$.90/yd

S-VRL-200 – 2" Loop

\$.90/yd

Pressure-sensitive Velcro (Adhesive-backed)

S-VPL-034 – 3/4" Loop, Black

\$.99/yd

S-VPH-034 – 3/4" Hook, White

\$.99/yd

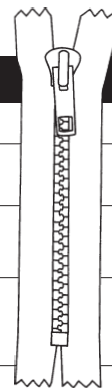
S-VPL-034 – 3/4" Loop, White

\$.99/yd

SALE! 2009 Update

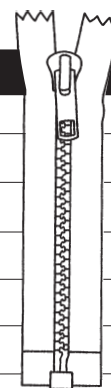
We ship fabric, hardware and zippers to addresses in the USA only.

ALL ZIPPERS 50–60% OFF RETAIL PRICE!



NON-SEPARATING #5 MOLDED TOOTH ZIPPERS

LENGTH	PRICE	ORDER #	COLORS
9"	\$.50	S-09-M5N	Beige, jade, teal blue, turquoise, wine
15"	\$.60	S-15-M5N	Fuchsia, kelly, orange, red, royal
18"	\$.70	S-18-M5N	Beige, cream, dark grey, fuchsia, jade, kelly, light blue, light grey, orange, sage, teal blue, turquoise, wine
22"	\$.50	S-22-M5N	Dark grey, tangerine

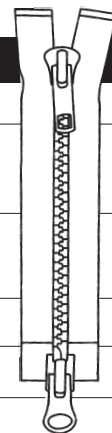


ONE-WAY SEPARATING #5 MOLDED TOOTH ZIPPERS

LENGTH	PRICE	ORDER #	COLORS
12"	\$.50	S-12-M51	Magenta, royal
14"	\$.80	S-14-M51	Royal, wine
16"	\$.90	S-16-M51	Beige, royal, wine
22"	\$1.00	S-22-M51	Jade, kelly
24"	\$1.05	S-24-M51	Dark grey, fuchsia, jade, light grey, teal blue, turquoise, wine
34"	\$1.10	S-34-M51	Kelly, yellow

TWO-WAY SEPARATING #5 MOLDED TOOTH ZIPPERS

LENGTH	PRICE	ORDER #	COLORS
26"	\$1.20	S-26-M52	Dark grey, fuchsia, jade, kelly, light grey, red, teal blue, turquoise, wine
28"	\$1.25	S-28-M52	Dark grey, fuchsia, jade, light blue, light grey, purple, red, royal, teal blue, turquoise, wine
30"	\$1.30	S-30-M52	Kelly, royal
36"	\$1.40	S-36-M52	Kelly, light blue, light grey, orange
38"	\$1.45	S-38-M52	Kelly, light grey, orange, red, royal, wine, yellow
40"	\$1.50	S-40-M52	Dark grey, fuchsia, jade, kelly, light blue, light grey, orange, purple, teal bue, royal, turquoise, wine, yellow



NON-SEPARATING #2.5 COIL ZIPPERS

TYPE	LENGTH	PRICE	ORDER #	COLORS
Neckline	6"	\$.25	S-06-C2N	Royal
Pocket	7"	\$.25	S-07-C2P	Light blue, royal, sage, teal blue, turquoise